



On August 18, 2009, the commission of the Port of Skagit adopted color schemes for buildings at the Skagit Regional Airport, the Bayview Business Park, and the La Conner Marina. The following is a list of approved colors and we encourage you to stop by the Port of Skagit administrative offices in Burlington to view the actual color samples. As you consider painting and other building maintenance improvements in the future, please refer to this approved color palette during the planning of your project. As always, please notify Port staff in advance of any changes to your building.

<b>Skagit Regional Airport</b>		
Weathered Copper	Cool Zactique II	Sierra Tan
 <i>Cool Weathered Copper</i> R 32 • E .86 • SRI 33	 <i>Cool ZACTique II<sup>1*</sup></i> R 31.3 • E .85 • SRI 32	 <i>Cool Sierra Tan</i> R 49.1 • E .86 • SRI 56
Ash Grey	Antique Patina	Cool Parchment
	 <i>Cool Antique Patina<sup>1</sup></i>	 <i>Cool Parchment</i> R 52.6 • E .83 • SRI 60
Old Town Gray	Colonial Red: Trim Only	Tahoe Blue
 <i>Cool Old Town Gray</i> R 40.5 • E .85 • SRI 44	 <i>Cool Colonial Red</i> R 30.1 • E .85 • SRI 30	 <i>Cool Tahoe Blue</i> R 28.9 • E .85 • SRI 25
Zinc Gray	Forest Green: Trim Only	Dark Bronze: Trim Only
 <i>Cool Zinc Grey</i> R 38.6 • E .85 • SRI 41	 <i>Cool Forest Green</i> R 29.5 • E .84 • SRI 29	 <i>Cool Dark Bronze</i> R 28.7 • E .83 • SRI 27

## Bayview Business Park

Weathered Copper	Cool Zactique II	Sierra Tan
 <i>Cool Weathered Copper</i> R 32 • E .86 • SRI 33	 <i>Cool ZACTique II<sup>TM</sup></i> R 31.3 • E .85 • SRI 32	 <i>Cool Sierra Tan</i> R 49.1 • E .86 • SRI 56
Ash Grey	Antique Patina	Cool Parchment
 <i>Cool Ash Grey</i> R 40.5 • E .85 • SRI 44	 <i>Cool Antique Patina<sup>l</sup></i> R 30.1 • E .85 • SRI 30	 <i>Cool Parchment</i> R 52.6 • E .83 • SRI 60
Old Town Gray	Colonial Red: Trim Only	Tahoe Blue
 <i>Cool Old Town Gray</i> R 40.5 • E .85 • SRI 44	 <i>Cool Colonial Red</i> R 30.1 • E .85 • SRI 30	 <i>Cool Tahoe Blue</i> R 28.9 • E .85 • SRI 25
Zinc Gray	Dark Bronze: Trim Only	Forest Green: Trim Only
 <i>Cool Zinc Grey</i> R 38.6 • E .85 • SRI 41	 <i>Cool Dark Bronze</i> R 28.7 • E .83 • SRI 27	 <i>Cool Forest Green</i> R 29.5 • E .84 • SRI 29

<b>La Conner Marina</b>		
Weathered Copper	Zinc Gray	Sierra Tan
 <p><i>Cool Weathered Copper</i> R 32 • E .86 • SRI 33</p>	 <p><i>Cool Zinc Grey</i> R 38.6 • E .85 • SRI 41</p>	 <p><i>Cool Sierra Tan</i> R 49.1 • E .86 • SRI 56</p>
Ash Grey	Cool Zactique II	Cool Parchment
	 <p><i>Cool ZACTique II 1*</i> R 31.3 • E .85 • SRI 32</p>	 <p><i>Cool Parchment</i> R 52.6 • E .83 • SRI 60</p>
Old Town Gray	Dark Bronze: Trim Only	Tahoe Blue
 <p><i>Cool Old Town Gray</i> R 40.5 • E .85 • SRI 44</p>	 <p><i>Cool Dark Bronze</i> R 28.7 • E .83 • SRI 27</p>	 <p><i>Cool Tahoe Blue</i> R 28.9 • E .85 • SRI 25</p>



*Cool Metallic Champagne*<sup>®</sup>  
R 44.8 • E .85 • SRI 50



*Cool Metallic Silver*<sup>®</sup>  
R 48.9 • E .88 • SRI 56



*Cool Matte Black*  
R 25.4 • E .83 • SRI 23



*Cool Hemlock Green*  
R 31.9 • E .85 • SRI 32



*Cool Regal Blue*  
R 26.8 • E .85 • SRI 26



*Cool Jade Green*  
R 26.5 • E .84 • SRI 25



*Cool Regal White*  
R 72.2 • E .86 • SRI 88



*Cool Marine Green*  
R 40.5 • E .86 • SRI 44



*Cool Red*  
R 40.5 • E .86 • SRI 44



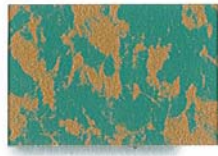
*Cool Leaf Green*  
R 25.5 • E .84 • SRI 23



*Cool Metallic Copper*<sup>®</sup>  
R 43.1 • E .85 • SRI 47



*Cool Rustique*<sup>®</sup>



*Cool Aegean Copper*<sup>†</sup>



*Weathering Copper*<sup>†</sup>



*Cool Terra-Cotta*  
R 35.5 • E .86 • SRI 38