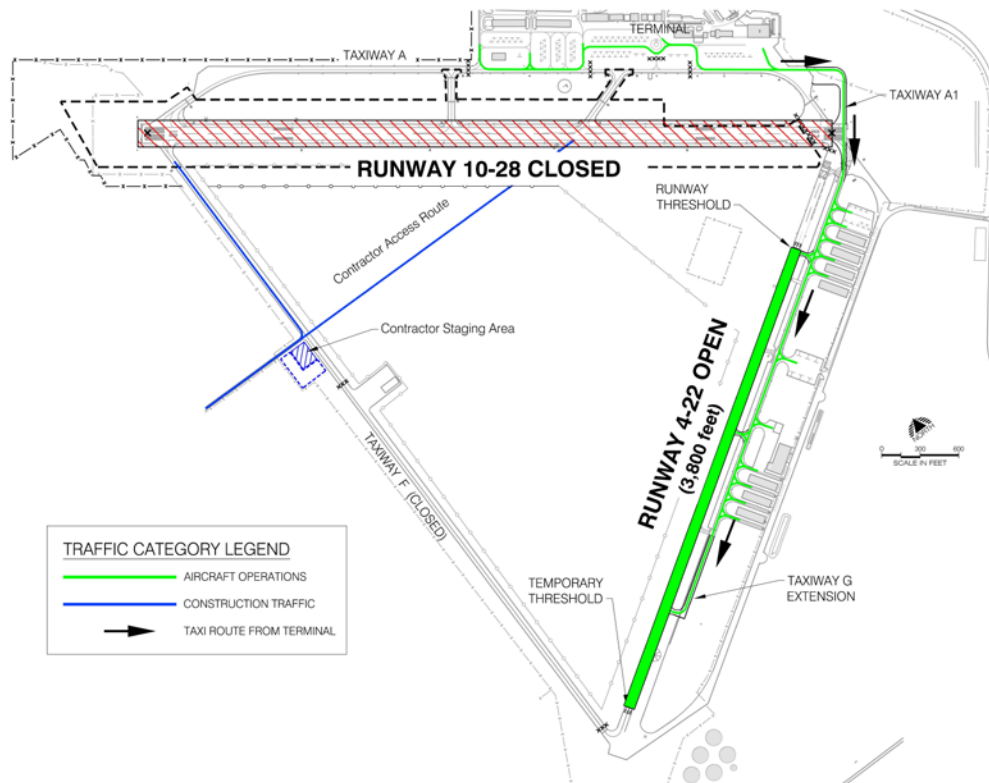


# NOTICE



## Port of Skagit

### RUNWAY 10-28 IMPROVEMENT PROJECT STATUS WEEK OF SEPTEMBER 17, 2012



- **Runway 04-22 – OPEN**
- **Runway 10-28 – CLOSED THROUGH MID-OCTOBER**
- **Taxiway B connection to Taxiway G North – OPEN**
- **Taxiway A – West 2,500 feet and Taxiway F - CLOSED**

Always check NOTAMs for current closure status.

Work this week includes paving Runway 10-28 (future RWY 11-29), continued electrical work, and installation of the wildlife deterrent fencing off the end of Runway 10.

For more information go to <http://www.portofskagit.com/skagit-regional-airport/runway-10-28-rehabilitation> or call (360) 757-0011.