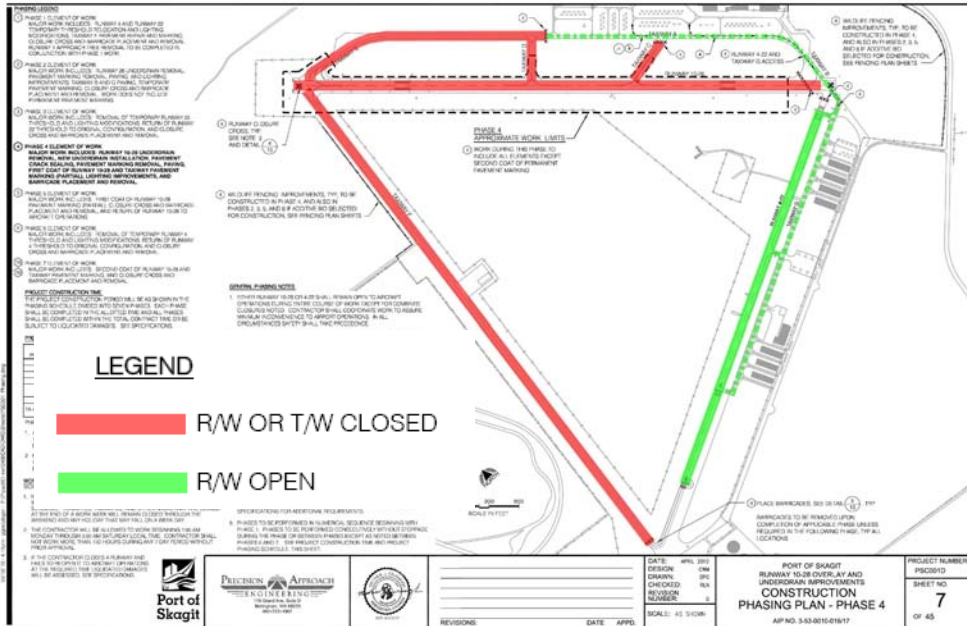


NOTICE



Port of Skagit

RUNWAY 10-28 IMPROVEMENT PROJECT STATUS WEEK OF JUNE 13, 2011



- **Runway 04-22 – OPEN**
- **Taxiway B connection to Taxiway G North – OPEN**
- **Runway 10-28 – CLOSED THROUGH JUNE**
- **Taxiway F and Taxiway A North - CLOSED**

Always check NOTAMs for current closure status.

Work on the airport this week includes completion of mainline paving on R/W 10-28, paving connecting taxiways, pavement marking, and installing wildlife fencing on Taxiway F.

For more information go to www.portofskagit.com/skagit-regional-airport/runway-10-28-rehabilitation or call (360) 757-0011.